

National Theatre



Film and Photography



CONTENTS

About	04-06
Exteriors	08-09
Interiors	12-13
Additional Spaces	16-17
The Green Store	20-21
Useful Information	22-23



ABOUT

Discover the range of spaces that are available to hire at the National Theatre. Our spaces have been used for feature films, TV, fashion and commercial shoots.



The National Theatre is the perfect location for commercial film and photo shoots. With panoramic views of the river Thames and striking Brutalist architecture, we've been the chosen location for multiple award-winning television and blockbuster productions, advertising campaigns and high-end fashion shows.



The National Theatre is a charity. All the money made from filming and photography shoots goes back into the theatre, to support our charitable works.

Previous clients have included:

- Vogue
- Adidas
- Alexander McQueen
- Netflix

‘We loved shooting at the National Theatre, such an iconic central London location which creatively gives so many great angles and shooting opportunities. From initial contact to wrap, the National Theatre were very accommodating and easy to deal with.’

Hugo Boss for Next



EXTERIORS

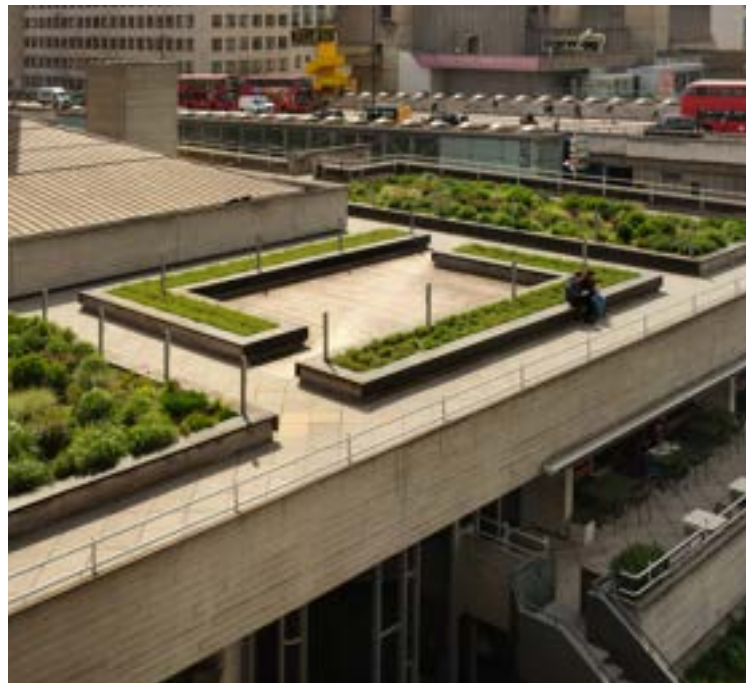
With terraces, Brutalist backdrops and central London riverside views, the National Theatre offers a range of outdoor spaces.

The terraces wrap around the second floor, offering panoramic views of the South Bank and over Waterloo Bridge. Our open spaces make it a firm favourite for shoots and filming.

The ground level stretches from the base of the theatre right to the riverfront, making it perfect for installations and events.

Previous uses of our spaces include:

- Catwalk for London Fashion Week
- Backdrop for a design photo shoot
- London skyline
- Student photography



‘Super easy, very helpful from our initial unorganised visit right through to shoot day there was never an issue with our requests. Would certainly put the building forward again for upcoming shoots and recommend Stephanie and her team to my contacts within the industry’

Bangerz and Nash



INTERIORS

Inside the building, warm lighting complements the high, honeycombed ceilings and open foyers. A space that is highly adaptable to many different locations and settings, from NASA to futuristic office space, a blank canvas for you to create your story.

We also have a number of restaurant settings, cafés and bars which are available to hire as independent locations and an underground car park.

A favourite for London Fashion Week and filmed events, the space is truly versatile and unique.



‘It was an absolute pleasure filming at the National Theatre. The team were super helpful throughout the whole processes and made shooting there a dream! Honestly one of the smoothest shoots I’ve ever done. I can’t recommend the National Theatre enough.’

ASOS



ADDITIONAL SPACES

Need a blank canvas for your next shoot? Our flexible, multi-purpose rooms are ready to adapt to your production demands. Suitable for, costume changes, seamless hair and makeup, a buzzing crew hub, or a focused meeting space.

Alternatively they could be imagined as a board room or a class room for film. We can provide a wide range of multi-functional rooms available for hire.



‘The Producers were very impressed with how the Business Development Team at National Theatre looked after the crew and their requests on the lead up to and during our recent shoot. It’s always a pleasure to work at a location who understands the needs of a crew. We look forward to returning to film here in the future.’

Jo Malone



FOOD AND DRINK

Discover unique dining venues within our building, perfect for your film or photography project.

Bathed in natural light from the South Bank, Atrium Café offers a spacious and versatile environment. With its open barista setup, deli counters, and generous width, it provides exceptional flexibility for camera placement.



Forza Wine presents a fashionable riverside terrace which seats 70. Indoors, a contemporary open kitchen overlooks a mix of high and low seating for up to 100 guests, all within a chic, modern interior crafted by Gundry + Ducker.



A testament to Brutalist design, Lasdun captivates with its distinctive porthole door, luxurious brass and mahogany, and a long, dramatic dark-marble bar. It can comfortably seat 100 or accommodate 200 standing.



THE GREEN STORE

The Green Store comprises of three vast and atmospheric warehouses, making up 45,000 square feet. Conveniently located 15 minutes from Bermondsey Underground station and five minutes from South Bermondsey Overground station.

The costume room is overflowing with row upon row of vibrant costumes used in past productions. The props room is a treasure trove, offering a glimpse into the world of grand productions.

Here, you'll discover ornate thrones, chaises, lighting fixtures, vintage luggage, rugs, and countless other props.

Finally, the tech store houses neatly stacked flight cases alongside various eclectic set and lighting pieces.

The Green Store also house the Costume and Pops Hire department, offering thousands of beautifully crafted costumes, furniture and props from past productions for hire.





For hire enquiries :

Costume hire

Email:

costume_hire@nationaltheatre.org.uk

Props hire

Email:

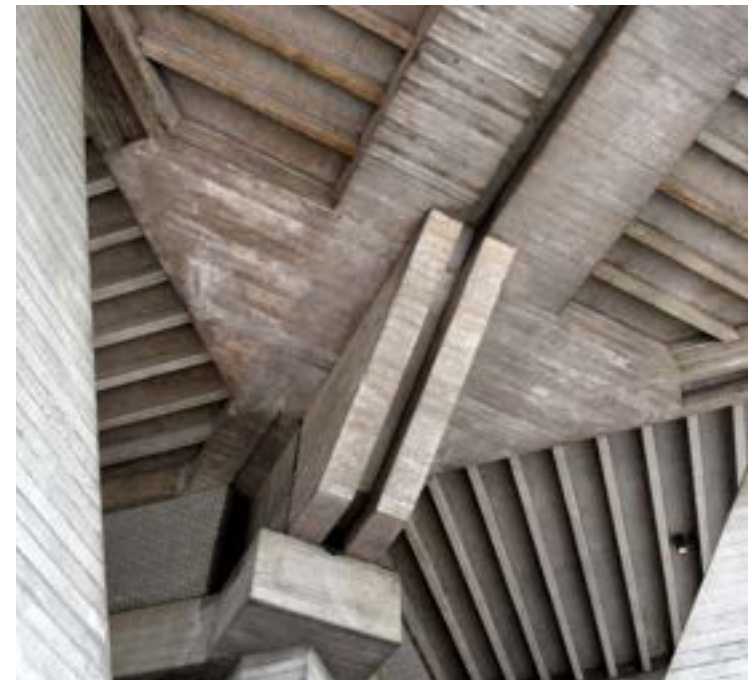
props_hire@nationaltheatre.org.uk



USEFUL INFORMATION

Location fees

The team is experienced at handling small shoots through to large blockbuster events. We can run through options and any additional requirements you may have to be suit your needs and budget, including catering, security and event management. We provide a bespoke quote for each shoot, taking into consideration requirements, access and crew size.





Public liability insurance

We need our clients to have cover of over **£5 million** in place when contracting with us.

On-site parking

We have a number of options for parking. This includes within the National Theatre car park, as well as a space on ground level suitable for one Winnebago or two Luton vans.

More unusual requests

We can guide you in any approvals required for more unusual activity from the start of your initial enquiry (eg animals, drone activity).

Permission

As with most similar venues, all filming and photography on National Theatre premises (other than that for personal use) requires prior authorisation.

Our security team may approach you and ask you to stop filming and to delete files if this has not been agreed in advance.

Please contact the team for further information and to check availability

Filming@nationaltheatre.org.uk